

 Become A Global High Quality  
**Power Lithium Battery Solution Provider**



**iSWAY** BATTERY SHENZHEN SI-SWAY NEW ENERGY CO., LTD.



# CONTENTS

- 01** Company Profile
- 02** Team & Culture
- 03** Business & Products
- 04** Service & Support
- 05** Cooperative Partner



## About SI-SWAY

仕  
威  
新  
能  
源

Shenzhen SI-SWAY New Energy Co., LTD., established in 2017, is a high-tech enterprise comprising a team of R&D professionals and sales personnel with extensive experience in the lithium battery industry. Presently, Shiwei New Energy's primary focus is on the production and sale of lithium iron phosphate battery packs, which are extensively utilised in a multitude of applications, including golf carts, scenic sightseeing vehicles, UTVs, ATVs, forklift trucks, and more. The factory has obtained ISO9001 quality system certification and holds numerous product patents. Additionally, it has obtained EU CE, UN38.3, MSDS, UL, and over 100 other certifications. In China, the company has established strategic cooperation with a number of golf cart manufacturers, and are actively exploring overseas markets. Currently, the company has business contacts with dozens of countries and regions. It is believed that, in accordance with the company philosophy of combining reputation with product quality and scientific and technological innovation for development, Shiwei will be better placed to serve its customers and contribute more to the development of the global new energy industry.



# About SI-SWAY



- The facility encompasses 3,000 square feet of manufacturing space.



- The team comprises over ten engineers and technicians, each with considerable experience in the lithium industry.



- The company has been granted more than 100 product patents and certifications.



- Monthly production capacity over 1000 sets of battery packs

# SI-SWAY Vision, Mission, Values

- **Vision**

Become a top global lithium battery supplier.

- **Mission**

Make customers' businesses more valuable through quality products and new technology. Promote the global new energy industry.

- **Values**

Quality, Innovation, Collaboration, Sharing



## QUALITY

Reliable, stable products and services of the highest quality.

## COORDINATION

Effective communication and collaboration within the team will optimise the efficiency of our delivery processes.



## INNOVATIONS

Improving quality and competitiveness through product and service innovation.

## SHARING

Achieving success and sharing fairly.

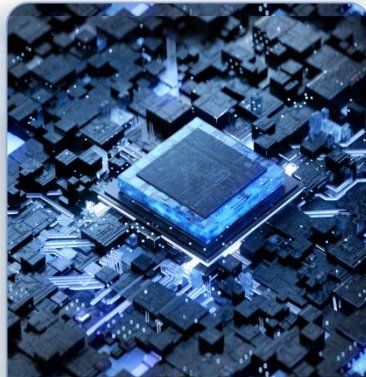


# Main Product Service



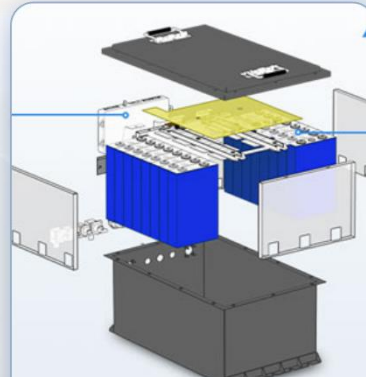
**Lithium Battery Pack  
Production And R&D**

Including power and storage  
battery packs



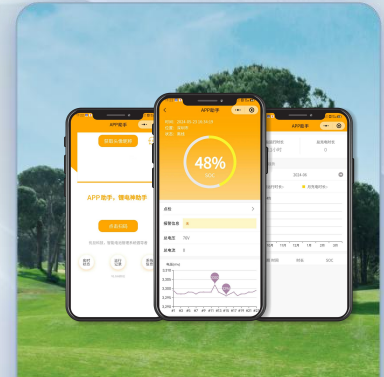
**Hardware  
Customisation**

Support for the customisation  
of product functional  
requirements according to  
customer needs.



**Structural  
Customisation**

Support customers'  
customised requirements  
for non-conventional  
sizes and structures



**Software  
Customisation**

Supports customisation  
of communication  
protocols, applications  
and other requirements.

# Product Application Scenarios

Electric Golf Cart



Electric Sightseeing Car



Electric Forklift



Electric Train



Electric Boats



AGV



Home Energy Storage Cabinet



Recreational Vehicle



Electric trucks



# Power Battery Series of Golf Cart Lithium Battery



The SI-SWAY Golf Cart batteries range is designed to enhance your experience, offering a seamless and reliable solution that meets the evolving needs of our customers. With an extended lifespan, extended range, minimal maintenance requirements and a 10-year lifespan, these batteries provide unparalleled performance and durability.

**0**

Maintenance

**2.5** hours

rapid recharge

**4000+**

Cycle Life

**5** yr

Warranty

**A** Grade

Branded batteries

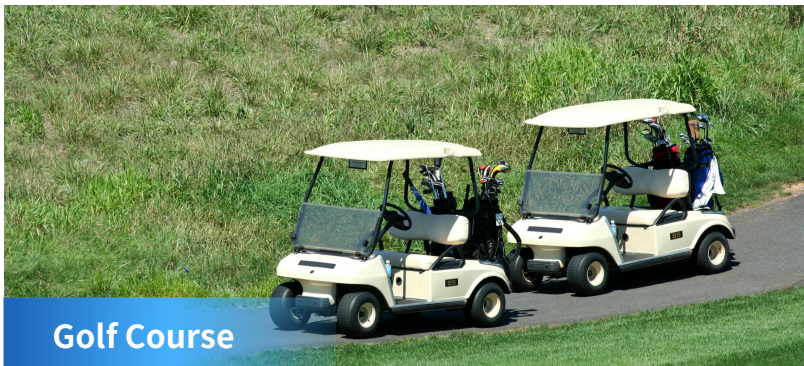
**10** yr

Design Life





# Power Battery Series for Golf Cart Specific Application Scenarios



Golf Course



Scenic Area



Patrol Car



Communal



Exhibition Centre



Enterprise · Factor

# Power Battery Series of Golf Cart Lithium Battery



Model	Nominal Voltage	Nominal Capacity	Nominal Energy	Cycle Life	Dimensions (L*W*H)	Weight lbs. (kg)	Charge Current	Discharge Current	Maximum Discharge	Casing Material	IP Rating
-------	-----------------	------------------	----------------	------------	--------------------	------------------	----------------	-------------------	-------------------	-----------------	-----------

## 38.4V System

SW36100	38.4v	105Ah	4.03kWh	4000 次	470×300×280(mm)	40 KG	25 A	100 A	200A(30 S)	spcc	IP65
SW36210		210Ah	8.06kWh		670×300×300(mm)	75 KG	50 A	200A	400A(30 S)		

## 51.2V System

SW48105	51.2V	105 Ah	5.37 kWh	4000次	550×320×280 (mm)	50 KG	25 A	50 A	100A(30 S)	spcc	IP65
SW48150		150 Ah	7.68 kWh		760×300×280(mm)	70 KG	30 A	150 A	300A(30 S)		
SW48210		210 Ah	10.75 kWh		895×300×255(mm)	95 KG	50 A	210 A	400A(30 S)		
SW48230		230 Ah	11.77 kWh		800×300×300(mm)	105 KG	50 A	230 A	400A(30 S)		
SW48280		280 Ah	14.33kWh		960×320×300(mm)	130 KG	55 A	280 A	400A(30 S)		
SW48315		315 Ah	16.12kWh		1000×300×300(mm)	145 KG	60 A	300 A	450A(30 S)		

# Power Battery Series of Golf Cart Lithium Battery



Model	Nominal Voltage	Nominal Capacity	Nominal Energy	Cycle Life	Dimensions (L*W*H)	Weight lbs. (kg)	Charge Current	Discharge Current	Maximum Discharge	Casing Material	IP Rating
<b>64V System</b>											
SW60105	64V	105 Ah	6.72 kWh	4000 次	520×340×270(mm)	60 KG	25 A	100 A	200A(30 S)	spcc	IP65
SW60150		150 Ah	9.60 kWh		707×430×245(mm)	85 KG	30 A	150 A	300A(30 S)		
SW60230		230 Ah	14.72 kWh		840×345×270(mm)	130 KG	50 A	230 A	400A(30 S)		





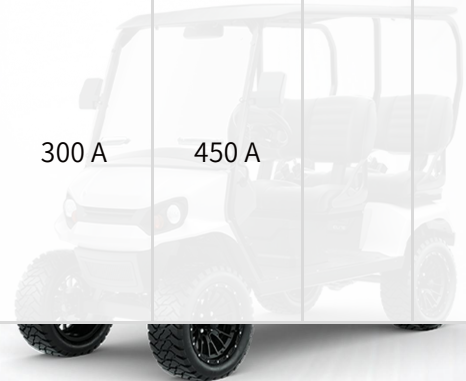
# Power Battery Series of Golf Cart Lithium Battery



Model	Nominal Voltage	Nominal Capacity	Nominal Energ	Cycle Life	Dimensions (L*W*H)	Weight lbs. (kg)	Charge Current	Discharge Current	Maximum Discharge	Casing Material	IP Rating
-------	-----------------	------------------	---------------	------------	--------------------	------------------	----------------	-------------------	-------------------	-----------------	-----------

## 72V System

SW72105	76.8v	105 Ah	8.06 kWh	4000次	600×300×300(mm)	70 KG	50 A	230 A	400 A	spcc	IP65
SW72150		150 Ah	11.52 kWh		1000×300×300(mm)	100 KG	30 A	150 A	300 A		
SW72173		173 Ah	13.28 kWh		800×420×300(mm)	120 KG	35 A	170 A	300 A		
SW72210	73.6v	210 Ah	16.12 kWh		1160×320×300(mm)	145 KG	40 A	210 A	400 A		
			15.45			135 KG					
SW72315	76.8v	315 Ah	24.19 kWh		A:710×360×275/ B:1160×320×300(mm)	210 KG	60 A	300 A	450 A		
	73.6v		23.18 kWh			205 KG					
SW72346	76.8V	346 Ah	36.57 kWh		800×740×300(mm)	135 KG	70 A	300 A	450 A		
SW72460		460 Ah	35.32 kWh		750×740×500(mm)	310 KG	90 A				
SW72520		520 Ah	39.93 kWh		650×740×500(mm)	350 KG	100 A				



# Power Battery Series of Golf Cart Lithium Battery



Model	Nominal Voltage	Nominal Capacity	Nominal Energy	Cycle Life	Dimensions (L*W*H)	Weight lbs. (kg)	Charge Current	Discharge Current	Maximum Discharge	Casing Material	IP Rating
-------	-----------------	------------------	----------------	------------	--------------------	------------------	----------------	-------------------	-------------------	-----------------	-----------

## 96V System

SW96210	96V	210 Ah	20.16 kWh	4000 次	A:710×360×275/ B:1160×320×300(mm)	180 KG	40 A	200 A	400 A	spcc	IP65
SW96315		315 Ah	30.24kWh		A:1160×320×300/ B:1160×320×300(mm)	265 KG	60 A	300 A	450 A		
SW96420		420 Ah	40.32 kWh		A:710×360×275/ B:1160×320×300(mm)	355 KG	80 A				

## 144V System

SW144280	144V	280 Ah	40.32kWh	4000 次	1050×800×300(mm)	355 KG	55 A	280 A	400 A	spcc	IP65
SW144420		420 Ah	60.48kWh		A:1000×650×300/ B:1000×800×300(mm)	530 KG	85 A	300 A	450 A		
SW144520		520 Ah	74.88 kWh		A:1500×360×300/ B:1500×640×300(mm)	660 KG	100 A				



# Power battery series of forklift lithium battery



The conversion of Lead acid batteries change to lithium batteries may necessitate a higher initial investment. However, the optimisation in terms of energy, equipment, labour and charging time can provide a more cost-effective solution. SI-SWAY lithium batteries are equipped with intelligent integrated systems that reduce unplanned equipment downtime, ensure optimal performance and boost productivity.

**0**

Maintenance

**2.5** hours

rapid recharge

**4000+**

Cycle Life

**5** yr

Warranty

**A** Grade

Branded batteries

**10** yr

Design Life



# Electric Counterbalanced Forklift Trucks



# Power battery series of forklift lithium battery



Model	Nominal Voltage	Nominal Capacity	Nominal Energ	Cycle Life	Dimensions (L*W*H)	Weight lbs. (kg)	Charge Current	Discharge Current	Maximum Discharge	Casing Material	IP Rating
<b>25.4V System</b>											
SW24105	25.4V	105Ah	2.68kWh	4000次	635×180×538(mm)	50 KG	50 A	100 A	300A(30 S)	spcc	IP65
SW24150		150Ah	3.84 kWh		635×180×538(mm)	60 KG	50 A	100 A	300A(30 S)		
sW24173		173Ah	4.42 KWh		25×210×630(mm)	80 KG	80 A	160 A	480A(30 S)		
SW24210		210Ah	5.37 KWh		630×295×290 (mm)	50 KG	70 A	200 A	300A(30 S)		
SW24280		280Ah	7.16 KWh		655×250×574(mm)	80 KG	200 A	200 A	300A(30 S)		
SW24315		315Ah	8.06 KWh		645×240×520 (mm)	100 KG	100 A	250 A	400A(30 S)		



# Power battery series of forklift lithium battery



Model	Nominal Voltage	Nominal Capacity	Nominal Energy	Cycle Life	Dimensions (L*W*H)	Weight lbs. (kg)	Charge Current	Discharge Current	Maximum Discharge	Casing Material	IP Rating
<b>38.4V System</b>											
SW36420	38.4V	420Ah	16.12 KWh	4000次	776×336×610(mm)	200 KG	120 A	300 A	450A(30 S)	spcc	IP65
SW36840		840Ah	32.25 KWh		983×521×782(mm)	400 KG	200A	300 A	450A(30 S)		
<b>48V System</b>											
SW48210	48V	210 Ah	10.75 kWh	4000次	800×365×410(mm)	135 KG	105 A	210 A	500A(30 S)	spcc	IP65
SW48230		230 Ah	11.77 kWh		8650×300×550(mm)	370 KG	200 A	350 A	500A(30 S)		
SW48280		280 Ah	14.33kWh		780×425×470(mm)	180 KG	140 A	280 A	500A(30 S)		
SW48315		315 Ah	16.12kWh		970×460×740(mm)	230 KG	157 A	350 A	500A(30 S)		
SW48460		460 Ah	23.55 KWh		1228×347×784(mm)	290 KG	200 A	350 A	700A(30 S)		



# Power battery series of forklift lithium battery



Model	Nominal Voltage	Nominal Capacity	Nominal Energ	Cycle Life	Dimensions (L*W*H)	Weight lbs. (kg)	Charge Current	Discharge Current	Maximum Discharge	Casing Material	IP Rating
<b>73.6V System</b>											
SW72420	73.6V	420 Ah	2.68kWh	4000次	800×370×570(mm)	410 KG	200 A	350 A	700A(30 S)	spcc	IP65
SW72460		460 Ah	3.84 kWh		1228×347×784(mm)	420 KG	200 A	350 A	700A(30 S)		
SW72560		560 Ah	4.42 kWh		1028×570×780(mm)	500 KG	200 A	350 A	700A(30 S)		
<b>80V System</b>											
SW80460	80V	460 Ah	36.80 kWh	4000次	1075×995×495(mm)	1300 KG	150 A	300 A	450A(30 S)	spcc	IP65
SW80560		560 Ah	44.80 kWh		1145×680×790(mm)	1300 KG	300 A	300 A	450A(30 S)		



# Energy Storage Battery Series



## 15kWh Residential LiFePO4 Battery Energy Storage System:

Nominal voltage	51.2V
Nominal capacity	300Ah
Charge time	2 hours (fast charge) or 5 hours (slow charge)
Discharge time	Approx. 5 hours (depending on actual usage) Battery Type
Battery Type	LiFePO4
weigh	50KG
size	380×202×648 (mm)
Operating Temperature	0°C-55°C / 32°F~ 131 °F
Storage Temperature	-40°C-55°C / -40°F~ 131 °F
Safety protection function	Over charge protection, over discharge protection, over current protection, short circuit protection, etc
Warranty	5 years

# Energy Storage Battery Series



## 20kWh Residential LiFePO4 Battery Energy Storage System:

Nominal voltage	51.2V
Nominal capacity	400Ah
Charge time	2 hours (fast charge) or 5 hours (slow charge)
Discharge time	Approx. 5 hours (depending on actual usage) Battery Type
Battery Type	LiFePO4
weigh	200KG
size	550×550×840 (mm)
Operating Temperature	0°C-55°C / 32°F~ 131 °F
Storage Temperature	-40°C-55°C / -40°F~ 131 °F
Safety protection function	Over charge protection, over discharge protection, over current protection, short circuit protection, etc
Warranty	5 years



# Energy Storage Battery Series



## 20kWh Residential LiFePO4 Battery Energy Storage System:

Nominal voltage	51.2V
Nominal capacity	400Ah
Charge time	2 hours (fast charge) or 5 hours (slow charge)
Discharge time	Approx. 5 hours (depending on actual usage) Battery Type
Battery Type	LiFePO4
weigh	250KG
size	560×560×650 (mm)
Operating Temperature	0°C-55°C / 32°F~ 131 °F
Storage Temperature	-40°C-55°C / -40°F~ 131 °F
Safety protection function	Over charge protection, over discharge protection, over current protection, short circuit protection, etc
Warranty	5 years

# Professional Engineering Team



# Efficient, Standardised Product Processes



1

Incoming material quality inspection



2

Lithium battery pack assembly



3

Installation of PDU



4

Installation of BMS



8

package and ship out



7

Battery Performance and Appearance Test



6

Battery aging test



5

Charge and Discharge Test



# Reliable Product Quality Assurance Framework

## Supplier Material Quality Control Management

- Vendor screening elimination mechanism
- This is to confirm the purchase of the first article samples.
- Material SIP inspection
- Quality Controller on Special Duty
- Continuous optimisation of improvement mechanisms



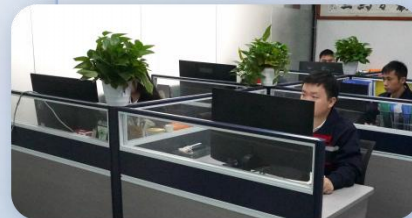
## Process Quality Control Management

- SOP Standard Production Operations
- Production process monitoring, inspection
- Mark the product process card.
- Define the roles and responsibilities of each staff
- Multiple process full inspection
- Test parameter validation
- Pre-shipment sampling and testing
- Shipment tracking, records

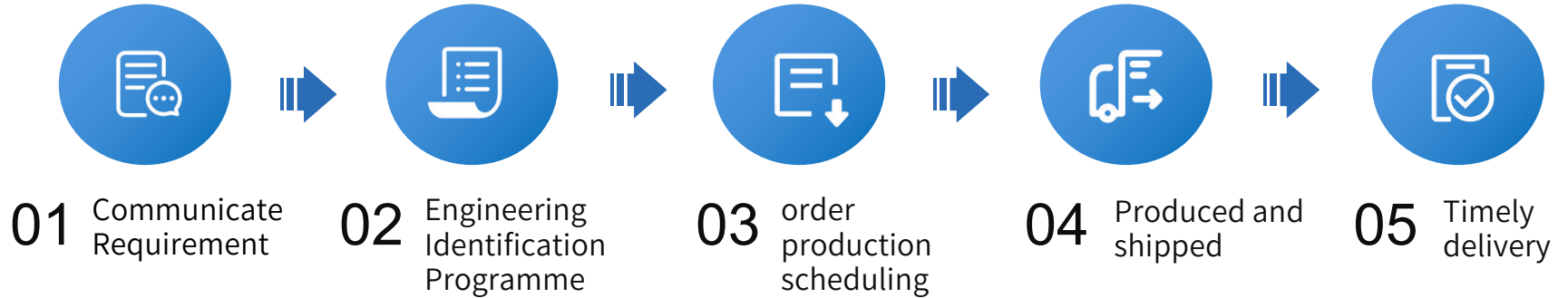


## QC system management

- ISO9001 Quality Management
- Process standards, QC documents
- Quality reports, continuous optimisation
- Regularly staff training
- Any issues are addressed promptly and efficiently.
- Material Quality Control
- Production process quality control management
- Corrective management of customer complaints



# Customer Service Process



# Company Certificates



## Customer Service 2485 Principles

- First response within **2** hours.
- Emergency measures and second response within **24** hours.
- Cause analysis, formulation of countermeasures and third response within **48** hours.
- Implementation of countermeasures, verification of the effectiveness of countermeasures, and four responses within **5** days.

## Extra Long Warranty

- (according to the factory time), Over the course of the five-year warranty period, product accessories will be replaced free of charge if they are found to be of a poor quality.



# Strategic Partners



Tel: 0755-85274971

Phone: +8613421303233 / +8613410367375

E-mail: [info@i-swaybattery.com](mailto:info@i-swaybattery.com)

Website: <https://www.i-swaybattery.com>

Company address: Building B, Xinxin 'an High-tech Park, No. 11, Tianyang five Road, Songgang Street, Bao 'an District, Shenzhen

